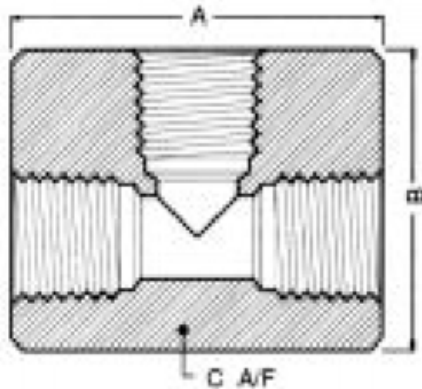


# TECHNICAL SPECIFICATION: 10,000 PSI Fitting Range N.P.T Female Barstock Tees



| Thread Size | Part No.      | A Ins. | B Ins. | C A/F ins. |
|-------------|---------------|--------|--------|------------|
| 1/8"        | 2FT 10K-SS-BK | 1.50   | 1.12   | 0.75       |
| 1/4"        | 4FT 10K-SS-BK | 2.00   | 1.50   | 1.00       |
| 3/8"        | 6FT 10K-SS-BK | 2.50   | 1.95   | 1.25       |
| 1/2"        | 8FT 10K-SS-BK | 2.50   | 2.00   | 1.50       |

**MATERIAL:** 316 S11 Stainless Steel

Our manufacturing plant in Aviemore is fully equipped with the very latest CNC Machine Tools. This coupled with excellent management and exacting production procedures approved to BS EN-ISO 9001:2000 standards, ensures continuity of quality and supply.

Complimenting the facility is our commitment to a continuing research and development programme striving to ever improve present standards of material and design.

An overnight delivery service, either by road or rail, is available to allow us to service most of the United Kingdom within 24 hours and with a major airport within easy reach, a similar service can be offered to our overseas customers.

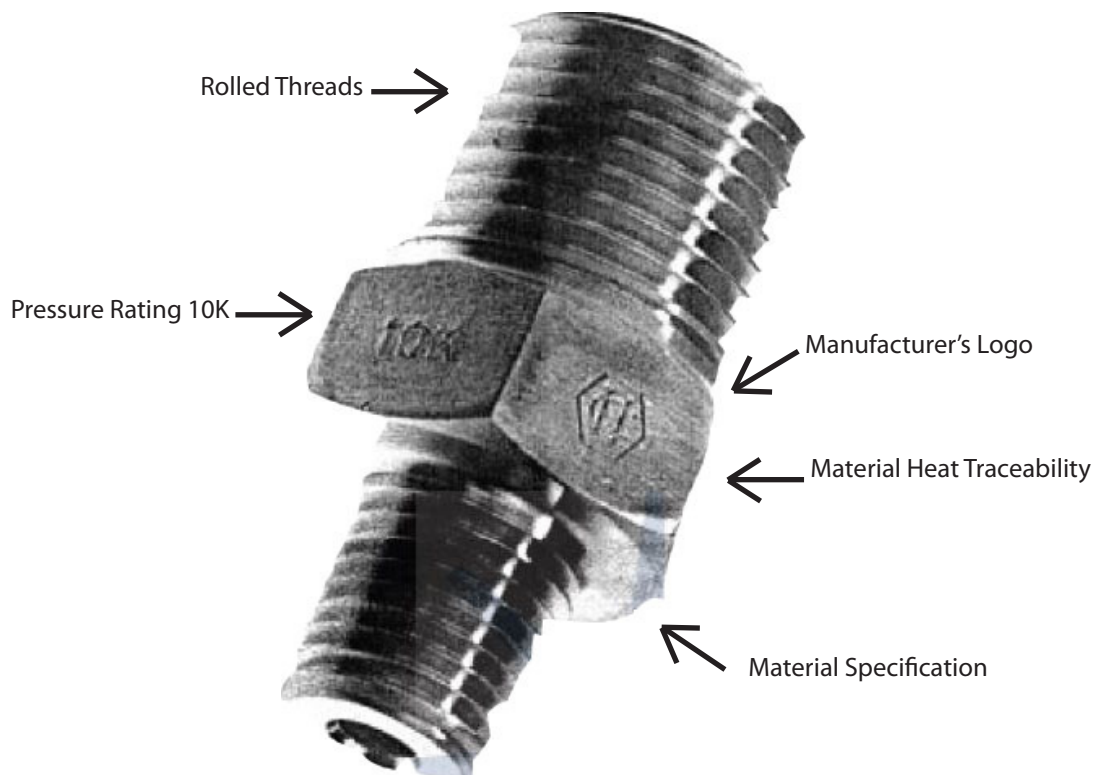
In addition, we have also established a priority production cell to process orders of an urgent nature.

Materials such as AISI 316L BS970 316 S11/BS EN 10088-3:1995 1.4404 Stainless Steel, steel and exotics are available upon request. Most of these materials are held in stock, however, we also welcome enquiries for non-listed fittings and adaptors.

TECHNICAL SPECIFICATION:  
**10,000 PSI Fitting Range**  
**N.P.T Female Barstock Tees**

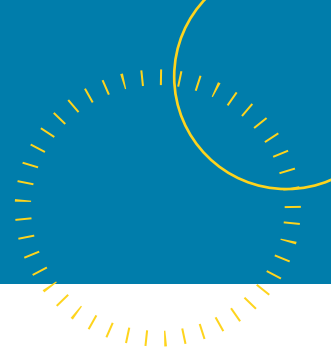


## STAMP OF QUALITY



- Manufacturing Procedures conform to BS EN ISO 9001 : 2000
- Full Material Traceability
- Material Certification
- Superior Rolled Threads
- All Threads Fully Protected
- Ex-Stock Availability

# TECHNICAL SPECIFICATION: 10,000 PSI Fitting Range N.P.T Female Barstock Tees



## Statement of Compliance to NACE MR0175 / ISO15156:2003

### INTRODUCTION

**NACE MR0175 / ISO1516** provides recommendations for selecting and qualifying materials for use in H2S containing environments.

**NACE MR-01-75/ISO15156** superseded **NACE MR-01-75** in December 2003.

This new standard is based upon the previous edition but now includes more strict requirements particularly:

- In many applications, Stainless Steel will no longer comply with **NACE MR0175/ISO1516**
- It is the equipment user and not supplier's responsibility to select materials suitable for the intended service.

### RECOMMENDING A CHOICE OF MATERIAL

For maintenance or like-for-like replacement of components on an already installed system, Hydrasun recommend the components are specified to the same version of NACE that was specified at the time the system was originally designed and manufactured. If this is earlier than December 2003 it is highly likely that Stainless Steel components will be satisfactory.

For a new system, Hydrasun recommend the components are specified to the current live version of NACE. **NACE MR0175/ISO 15156:2003** is the current live version and under most operating conditions require the components to be manufactured from a solution Annealed Nickel based Alloy, such as Hastalloy or Inconel. In most cases, stainless steel components manufactured by HMD or other suppliers will not conform to **NACE MR075/ISO 15156:2003**.

**NACE MR0175/ISO 15156:2003** is not prescriptive and there are exceptions based on the operating conditions. If in doubt ask a member of the Hydrasun Engineering or Quality Team for advice.

### CERTIFICATION TO NACE

Hydrasun can certify the following items to NACE:

- Any components manufactured from solution annealed nickel based alloy, such as hastalloy or inconel.
- Instrumentation tubing and compression fittings manufactured from 316 stainless steel.

However the certificate will clearly state

"Materials selected using **NACE MR0175/ISO 15156** are resistant to corrosion cracking under prescribed conditions but are not necessarily immune under all service conditions. It is always the equipment user's responsibility, and not Hydrasun's responsibility, to select a material based on the conditions in which it will be used.